



3DXpert™ for SOLIDWORKS®

INSTALLATION GUIDE

Release Note

3DXpert for SOLIDWORKS 14

Table of Contents

Hardware Requirements	1
Memory (RAM) / Processor:.....	1
Graphics Card:	1
3 Button Mouse	1
Software Requirements.....	2
Installation Privileges.....	3
Installation Procedure	3
Activation.....	6
Installation Stages	7
Installation Layout	8
Installation Scenarios	8

Hardware Requirements

The hardware requirements for installing 3DXpert for SOLIDWORKS are as follows:

Memory (RAM) / Processor:

Minimum: 16 GB RAM, 4 cores

Recommended: 32 GB RAM, 6 cores i7 (i7-6850K)



Note: To gain better I/O performance, it is recommended using a solid state hard Drive (SSD). Windows and 3DXpert for SOLIDWORKS should be installed on the SSD. The file management should be configured on a different hard drive, local or network based.

Graphics Card:

Quadro cards from NVidia and FireGL/FirePro cards from ATI are the most recommended cards for CAD/CAM software.

The performance of graphics cards is tightly related to driver version and memory size. The newer the driver and the greater the memory, the better the graphics card performance.

For recommended graphics cards see the following website:

<https://cimgraphics.cimatron.com>

The graphics card must support OpenGL 3.3:

Minimum: 1 Gb of memory

Recommended: 2 Gb of memory

3 Button Mouse

Software Requirements

The software requirements for installing 3DXpert for SOLIDWORKS are as follows:

The following Windows operating systems are supported:

Recommended:

- Windows Server 2008 or 2012.
- Windows 7, Professional/Ultimate Edition.
- Windows 8 or 8.1, Professional/Ultimate Edition.
- Windows 10, Professional/Ultimate Edition.



Note: .NET Framework 4.6.2 is an installation prerequisite. If this is not installed, it is automatically installed during the 3DXpert for SOLIDWORKS installation process.

Not supported:

- All 32-bit operating systems are not supported.
- Windows XP 64-bit is not supported.

Internet Explorer 9 or higher must be installed.

Installation Privileges

Only users that are logged-in as Administrators can install 3DXpert for SOLIDWORKS.
<https://www.3dsystems.com/software/3dxdpert-solidworks>

Installation Procedure

3DXpert for SOLIDWORKS is available for download from
<https://www.3dsystems.com/software/3dxdpert-solidworks>.

Prepare your computer for installation, as follows:

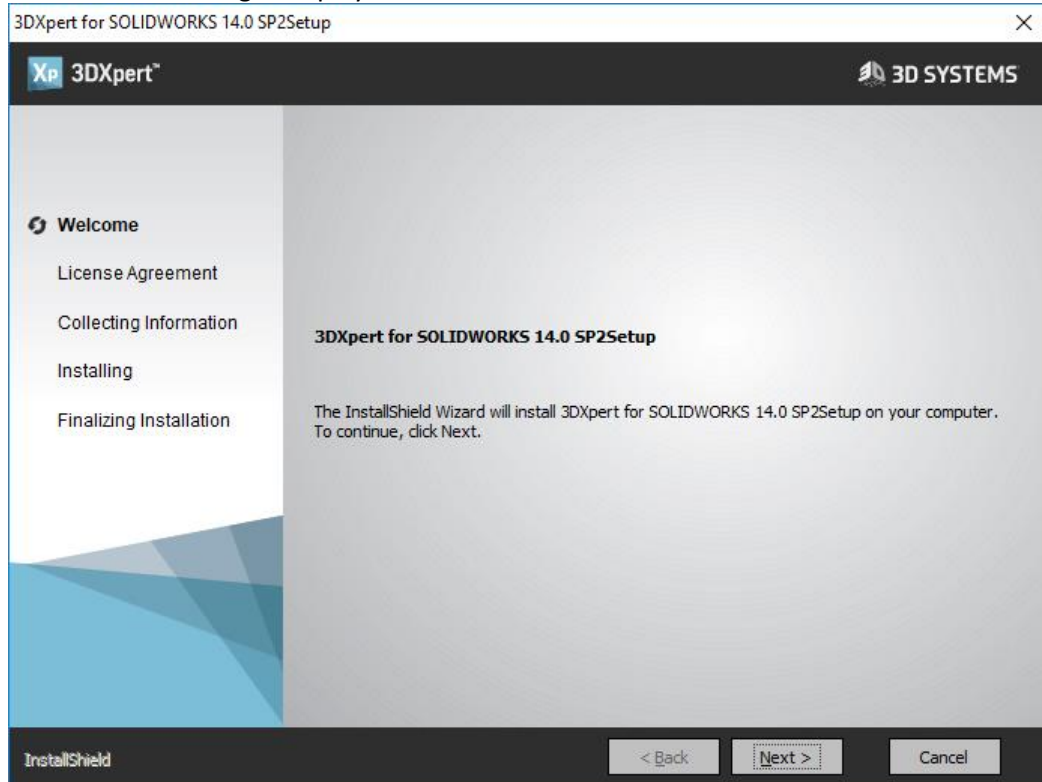
1. Close all other applications.
2. Install 3DXpert for SOLIDWORKS.

The installation program runs automatically; proceed according to the Installation Wizard instructions.

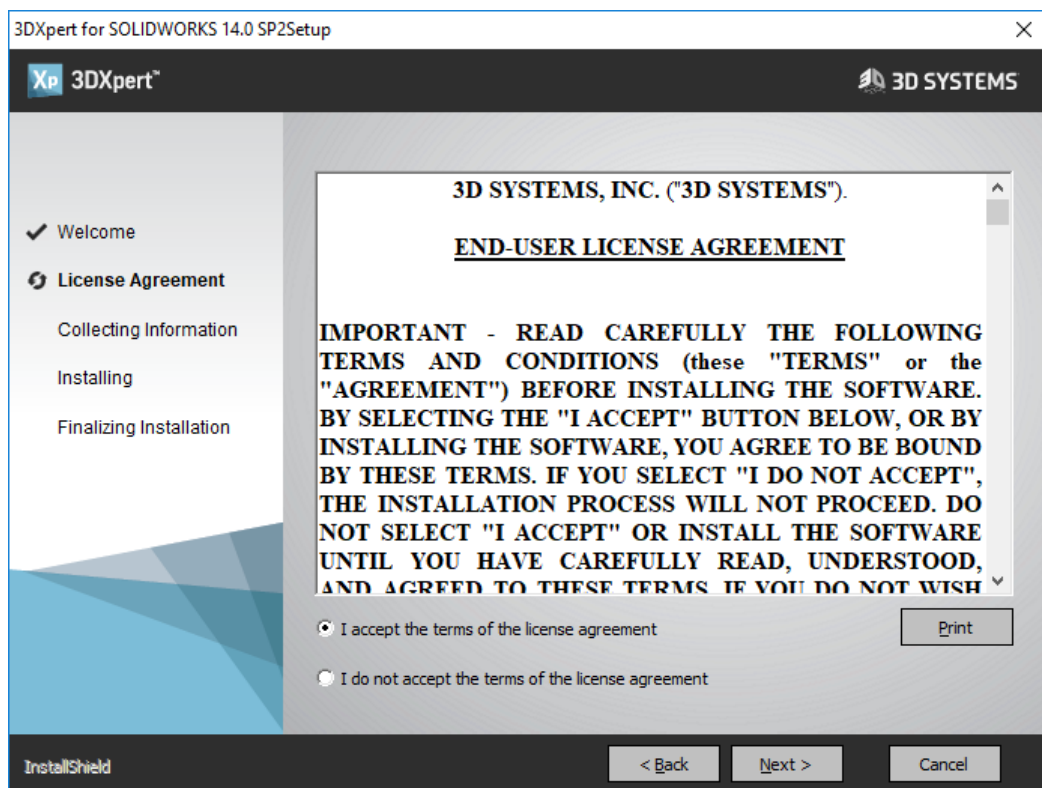


Note: Do not use spaces in any of the directory names (xxx yyy) – use underscores instead (xxx_yyy). 3DXpert for SOLIDWORKS does not support names with spaces.

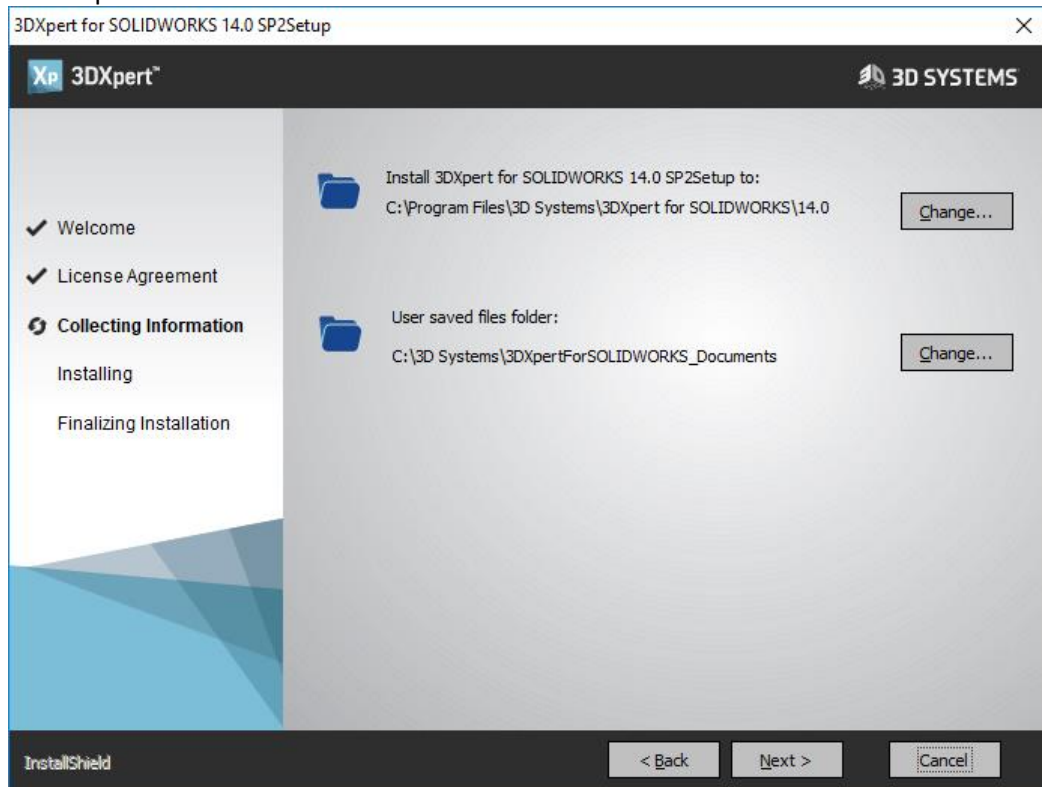
- The Welcome dialog is displayed. Click Next.



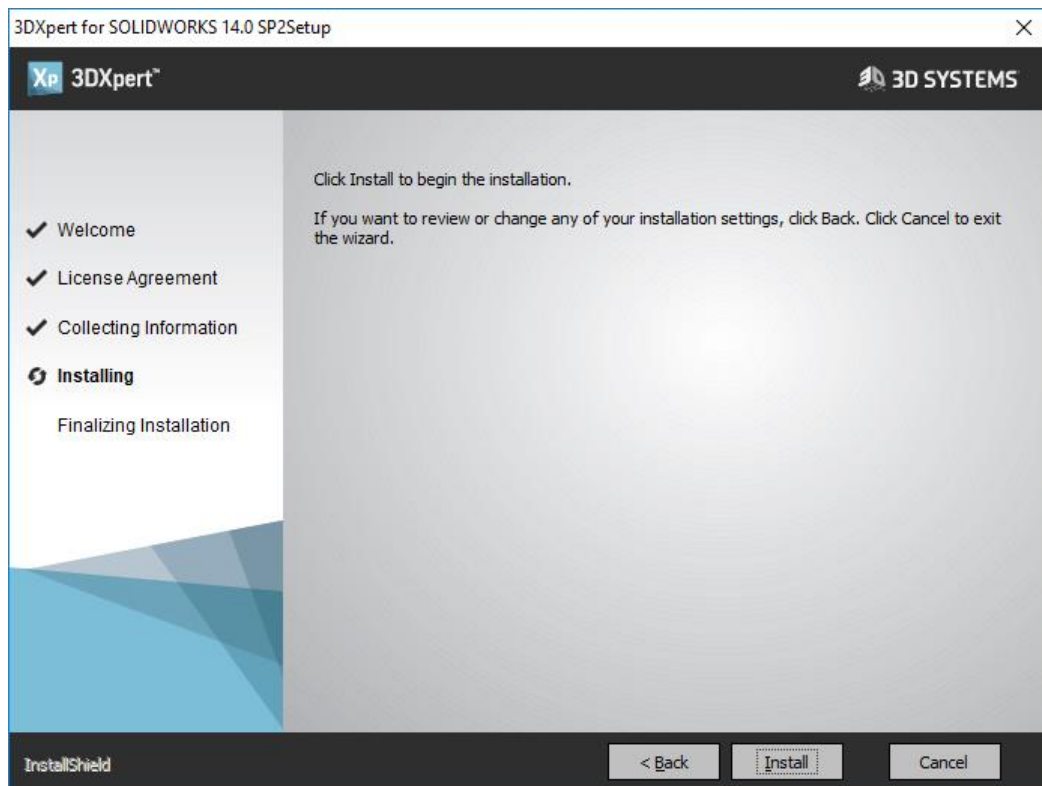
- The License Agreement dialog is displayed. Read it carefully. To accept the terms of the license agreement, select the appropriate option and click Next.



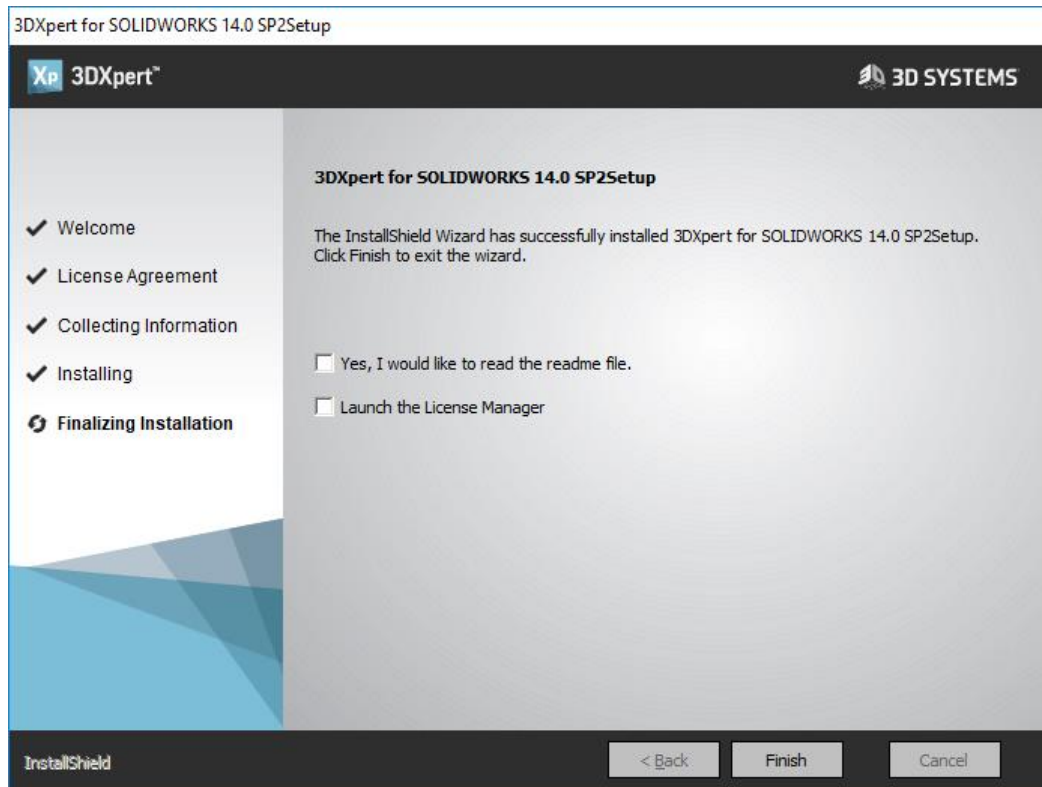
- The Destination Folder dialog is displayed. Change the destination folders as required, or accept the default locations. Click Next.



- The components are about to be installed in the Ready to Install dialog. Click Install.



7. When the installation is complete, we recommend that you read the Readme file. Click Finish to exit the installation procedure.



Activation

Once the installation is complete, you will need to activate your 3DXpert for SOLIDWORKS.

Refer to the **Activation** guide for further details.

Installation Stages

The installation program installs the following software first, prior to installing 3DXpert for SOLIDWORKS; these items are a prerequisite for the continuation of the installation:

- DotNet environment.
- Microsoft Visual C++ Redistributables



Note: During this stage of the installation, the system may require a restart.

The 3DXpert for SOLIDWORKS installation stages are as follows:

- Checks if the user running the installation has Administrator rights.
- Recognizes the existing 3DXpert for SOLIDWORKS versions on the computer (if any) and chooses the proper installation scenario: new, upgrade or additional installation (for a new major version):
 - Upgrades (overwrites) the previous installation, which is the default and recommended mode (for the same major version).
 - Side-by-side (additional) installation to the existing version (for a new major version).
- Creates 3DXpert for SOLIDWORKS software layout (folders and sub-folders) and copies files to it.
- Data Files –
 - Preserves relevant user-defined (newly created) and user-modified data files from previous installations.
 - Merges the preference file (CimatronE.prf), attribute template files (modeler.exl and other), and attributes translation file (AttrTrnMap.xml). This only occurs for an Upgrade or an Additional installation.
- Installs the Print to PDF driver.
- Set License Location using the license manager (Optional).
- Adjusts 3DXpert for SOLIDWORKS software to different computer environments; for example, different operating system languages: German, Japanese, etc.
- Uninstalls 3DXpert for SOLIDWORKS software: removes all installed files from the disk, cleans registry, and removes program group.

Installation Layout

The 3DXpert for SOLIDWORKS 14 folder structure is as follows:

```
...\3D Systems\3DXpert for SOLIDWORKS_Documents\  
...\Program Files\3D Systems\3DXpert for SOLIDWORKS\14.0\  
    \Program\  
    \SourceData\  
    \Workarea
```

The Data folder is located as follows:

```
...\ProgramData\3D Systems\3DXpert for SOLIDWORKS\14.0\Data\  
    \Workarea
```

The product's name and path (...**Program Files\3D Systems\3DXpert for SOLIDWORKS**) are set by default and can be changed. However, the location of the following sub-folders *cannot* be changed: Data, Program, SourceData and Workarea.

During the installation, you can change the location of the **3DXpert for SOLIDWORKS_Documents** folder. This is the default folder for user files.

Installation Scenarios

Several possible installation scenarios are supported, as follows:

1. **New Installation:** Install the latest 3DXpert for SOLIDWORKS version on a clean PC.
2. **Upgrade Installation:** When installing the same major version over an existing installation, the system automatically updates the version.